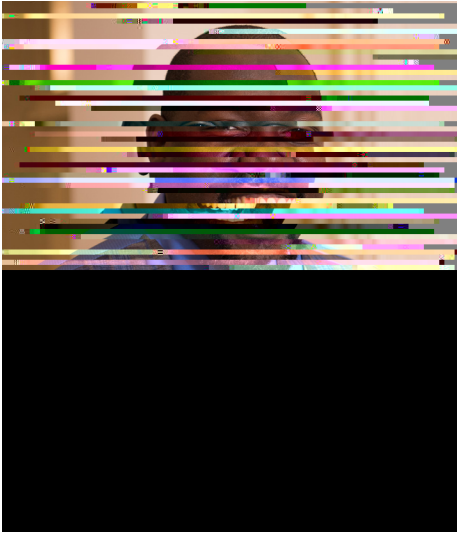


Sc hule f E rca

Special Education

W bste
UN VEI




Associate Professor

One of the hallmarks of the Webster University Education program is o



CONTENTS

- From The Chair 2
- What Our Students Are Saying..... 3
- Historical Timeline of the Special Education Program..... 4
- Master of Arts in Teaching.(MAT).....4-5
- Master of Arts (MA) in Special Education.....6-7.
- Applied Behavior Analysis8.....
- Dyslexia.....8.....
- Specialized Approches for Exceptional Learners.....9..

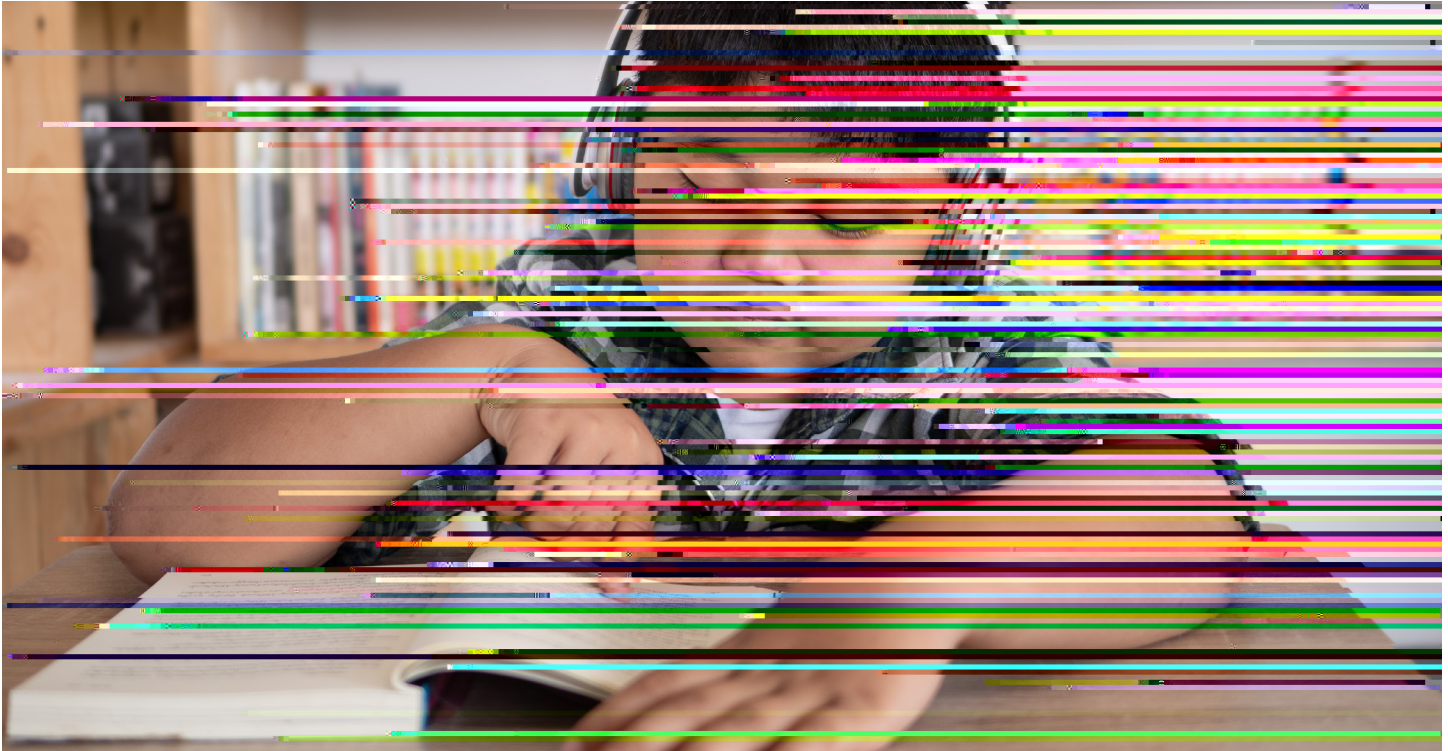
WHAT OUR STUDENTS ARE SAYING



K a a

Afer receiving my rst Master’s, I knew Webster was going to be my choice again for pursuing my Special Education degree. Whether on campus or online, the teaching styles were di erent, but very in-m.....n.5cial sldmann deionnd 12 /P n053undw 8.376 0 Tn fo(e a

MASTER OF ARTS (MA)



The Master of Arts (MA) program with a major in Special Education provides practicing educators, and related professionals, opportunities to study and research special education practices and services. Current issues and emerging trends are explored on a global level, with a strong focus on social justice and ethical themes at the local, national and /or international level. This program is offered online and at the St. Louis home campus.

Use their knowledge of general and specialized curricula to improve programs, supports and services at classroom, school, community and system levels. Facilitate the continuous improvement of general and special education programs, supports and services at the classroom, school and system levels for individuals with exceptionalities. Conduct (em le)se vato practiceoom,

The program emphasizes developmentally oriented theory and research in the areas of cognitive and socio-emotional development. Students are expected to use this knowledge to design and promote evidence-based interventions and instructional practices to enhance learning. Candidates explore opportunities for collaboration and advocacy within their educational settings that are designed to improve the quality of life of individuals with disabilities. The program of study recognizes the rapidly changing dimensions of special education and promotes the philosophy of integrated and

The Master of Arts in Special Education program does not lead to initial certification in special education. For more information about initial certification in special education (mild/moderate disabilities), please refer to the please refer to the Master of Arts section in the catalog or email certification@webster.edu

Graduates of this program are able to:

- Use valid and reliable assessment practices to minimize bias.

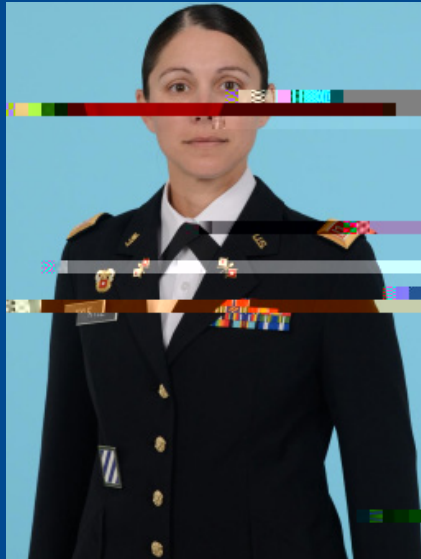
Collaborate with stakeholders to improve programs, services and outcomes for individuals with exceptionalities and their families.

MASTER OF ARTS (MA) SPECIAL EDUCATION

The MA special education majors are required to complete a minimum of 33 credit hours, 24 of which must be in special education. Students considering graduate study at the doctoral level are encouraged to complete six (6) credits of advanced research, complete a thesis, for a program total of 39 credit hours.

The following courses are required, with a minimum grade of B- in each course, for special education majors:

- **5270** (3 hours) or **503** (3 hours)
- **5313** (3 hours)
- **5500** (3 hours)
- **5300** (3 hours) or **5350** (3 hours)
- **5330** (3 hours)
- **6000** (3 hours) or **6250** (6 hours) (for graduate students interested in doctoral studies)
- **33** (15)



Veronica Kyle
Graduate in ABA Program

Professionals working towards

improving the quality of lives of persons with Autism Spectrum Disorder and/or other developmental disabilities

APPLY TODAY!
applywu.webster.edu/apply/

MASTER OF ARTS IN **SPECIAL EDUCATION**



“Begin with the end in mind. No matter what age the students we teach are, no matter what their current abilities are, we must prepare for the skills and tasks they will need to perform as adults.”

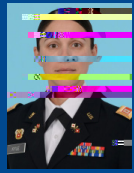
—Dr. Victoria McMullen
Adjunct Instructor



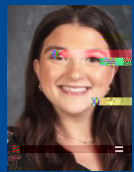
“Our learners have always been our focus. Our expert instructors, our supportive advisors, and our wrap around resources all help our students accomplish their goals for graduating from our programs.”

—Dr. Rena Rockwell
Lecturer

MORE FROM OUR STUDENTS...



I started my degree in Special Education with an emphasis in Applied Behavior Analysis while deployed to Afghanistan. Webster University and their help sta have gone above and beyond to accommodate my abnormal schedule help me succeed. The flexibility that online courses provide have enabled excel in school while overseas, during redeployment, PCS (moving duty locations) and without internet access for up to a week at a time. I will graduate December 2020 and on using Webster University for any future civilian schooling that I plan to pursue.



C

